

Select your language

- German
- English
- Spanish
- French
- Dutch
- Italian
- Polish
- Czech
- Russian
- Norwegian Bokmål

Worldwide English

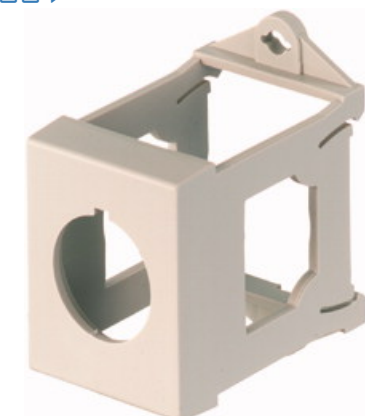


M22-IVS - IVS mounting rail adapter



216400 M22-IVS

[Overview](#) [Specifications](#) [Resources](#)



216400 M22-IVS

IVS mounting rail adapter

Alternate Catalog No.

EL-Nummer (Norway)

Service distribution boards top-hat rail adapter for flush mounting RMQ devices in installation distributor as serial flush-mounting

M22-IVSQ

4355435

• [Delivery program](#)

• [Technical data](#)

• [Design verification as per IEC/EN 61439](#)

• [Technical data ETIM 7.0](#)

• [Approvals](#)

• [Dimensions](#)

Delivery program

Accessories

General accessories

Basic function accessories

IVS top-hat rail adapters

Connection to SmartWire-DT

no

For use with

top-hat rail according to IEC/EN 60715 for front fixing

Technical data

General

Ambient temperatureOpen

-25 - +70 °C

Design verification as per IEC/EN 61439

Technical data for design verification

Rated operational current for specified heat dissipation [I_r]

0 A

Heat dissipation per pole, current-dependent [P_{rd}]

0 W

Equipment heat dissipation, current-dependent [P_{rd}]

0 W

Static heat dissipation, non-current-dependent [P_{rs}]

0 W

Heat dissipation capacity [P_{diss}]

0 W

Operating ambient temperature min.

-25 °C

Operating ambient temperature max.

+70 °C

IEC/EN 61439 design verification

10.2 Strength of materials and parts 10.2.2 Corrosion resistance

Meets the product standard's requirements.

10.2 Strength of materials and parts 10.2.3.1 Verification of thermal stability of enclosures

Meets the product standard's requirements.

10.2 Strength of materials and parts 10.2.3.2 Verification of resistance of insulating materials to normal heat

Meets the product standard's requirements.

10.2 Strength of materials and parts 10.2.3.3 Verification of resistance of insulating materials to abnormal heat and fire due to internal electric effects

Meets the product standard's requirements.

10.2 Strength of materials and parts 10.2.4 Resistance to ultra-violet (UV) radiation

Please enquire

10.2 Strength of materials and parts 10.2.5 Lifting

Does not apply, since the entire switchgear needs to be evaluated.

10.2 Strength of materials and parts 10.2.6 Mechanical impact

Does not apply, since the entire switchgear needs to be evaluated.

10.2 Strength of materials and parts 10.2.7 Inscriptions

Meets the product standard's requirements.

10.3 Degree of protection of ASSEMBLIES

Does not apply, since the entire switchgear needs to be evaluated.

10.4 Clearances and creepage distances

Meets the product standard's requirements.

10.5 Protection against electric shock

Does not apply, since the entire switchgear needs to be evaluated.

10.6 Incorporation of switching devices and components

Does not apply, since the entire switchgear needs to be evaluated.

10.7 Internal electrical circuits and connections

Is the panel builder's responsibility.

10.8 Connections for external conductors

Is the panel builder's responsibility.

10.9 Insulation properties 10.9.2 Power-frequency electric strength

Is the panel builder's responsibility.

10.9 Insulation properties 10.9.3 Impulse withstand voltage

Is the panel builder's responsibility.

10.9 Insulation properties 10.9.4 Testing of enclosures made of insulating material

Is the panel builder's responsibility.

10.10 Temperature rise

Not applicable.

10.11 Short-circuit rating

Is the panel builder's responsibility. The specifications for the switchgear must be observed.

10.12 Electromagnetic compatibility

Is the panel builder's responsibility. The specifications for the switchgear must be observed.

10.13 Mechanical function

The device meets the requirements, provided the information in the instruction leaflet (IL) is observed.

Technical data ETIM 7.0

Low-voltage industrial components (EG000017) / Accessories for control circuit devices (EC002024)

Type of electrical accessory

Other

Type of mechanical accessory

Other

Approvals

Product Standards

IEC/EN 60947-5; UL 508; CSA-C22.2 No. 14-05; CSA-C22.2 No. 94-91; CE marking

UL File No.

E29184

UL Category Control No.

NKCR

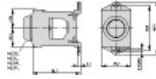
CSA File No.

012528

CSA Class No.

3211-03

Dimensions



CAD data

- [Product-specific CAD data](#)
(Web)
- [3D Preview](#)
(Web)

DWG files

- [DA-CD-adapter_ivs](#)
File
(Web)

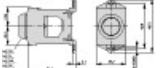
edz files

- [DA-CE-ETN.M22-IVS](#)
File
(Web)


Step files

- [DA-CS-adapter_ivs](#)
File
(Web)

Dimensions single product

- 
[116X097](#)
Line drawing
VS top-hat rail adapter

3D drawing

- 
[116I282](#)
Line drawing
VS top-hat rail adapter

Product photo

- 
[1160PIC-181](#)
Photo
VS top-hat rail adapter

Instruction Leaflet

- [RMQ-Titan System\(IL04716002Z\)](#)
Asset

Declaration of Conformity

EU

- [RMQ Titan \(Operating and signalling devices\) M2.../M30.../C22.../C30...](#) (DA-DC-00003657)
Asset
(PDF)

UK

- [RMQ Titan \(Operating and signalling devices\) M2.../M30.../C22.../C30...](#) (DA-DC-00003960)
Asset
(PDF)

Download-Center

- [Download-Center \(this item\)](#)
Eaton EMEA Download-Center - download data for this item
- [Download-Center](#)
Eaton EMEA Download-Center

 [Generate data sheet in PDF format](#)

 [Generate data sheet in Excel format](#)

 [Write a comment](#)

[Imprint](#) [Privacy Policy](#) [Legal Disclaimer](#) [Terms and Conditions](#)

© 2021 by Eaton Industries GmbH